

Preventa Metal Adjustable Pedestals

Technical datasheet

Preventa Metal Adjustable Pedestals

Technical datasheet



Preventa Metal Adjustable Pedestals

RAAFT® [FIND OUT MORE OR REQUEST A SAMPLE](#)
e: technical@raft.co
w: raft.co

Preventa Metal Adjustable Pedestals

Technical datasheet

PREVENTA METAL ADJUSTABLE PEDESTALS

SKU	HEIGHT RANGE MIN	HEIGHT RANGE MAX	WEIGHT PER PED	WEIGHT CAPACITY	CARBON EMBODIMENT
345001	5mm (0.19in)	–	0.38kg (13.40oz)	12kN (2.69 kipf)	1.09
345002	10mm (0.39in)	–	0.46kg (16.22oz)	12kN (2.69 kipf)	1.18
345003	15mm (0.59in)	25mm (0.98in)	0.50kg (17.63oz)	12kN (2.69 kipf)	1.22
345010	25mm (0.98in)	35mm (1.37in)	0.56kg (19.75oz)	12kN (2.69 kipf)	1.33
345011	35mm (1.37in)	55mm (2.16in)	0.58kg (20.45oz)	12kN (2.69 kipf)	1.36
345012	55mm (2.16in)	85mm (3.34in)	0.64kg (22.57oz)	12kN (2.69 kipf)	1.55
345013	85mm (3.34in)	145mm (5.70in)	0.71kg (25.04oz)	12kN (2.69 kipf)	1.36
345014	145mm (5.70in)	255mm (10.03in)	0.88kg (31.04oz)	12kN (2.69 kipf)	1.55
345015	255mm (10.03in)	365mm (14.37in)	1.06kg (37.39oz)	12kN (2.69 kipf)	1.55

Dimensions include top connector

Maintenance: once installed the pedestals are typically hidden and not accessible and do not require any further maintenance.

Fixing: free-standing installation onto a firm level surface. The top bracked clamps to the joist.

Composition: zinc-coated steel


Until testing is concluded, it can be assumed that the maximum weight load of the Metal Adjustable Pedestals is greater than 1 ton.

*The measurements include the total height of the pedestal and connector clip.

The life span of Raaft® metal pedestals based on the zine passivate treated steel is about 15 years.

RAAFT® PREVENTA SYSTEM - WEIGHTS KG/M²

PEDESTAL HEIGHT	30MM (1.18in) JOIST CENTRES			
	300mm (11.81in)	400mm (15.78in)	450mm (17.71in)	500mm (19.68in)
5mm (0.19in)	7.80kg/m ² (0.0110lb/in ²)	6.00kg/m ² (0.0085lb/in ²)	5.80kg/m ² (0.0082lb/in ²)	5.70kg/m ² (0.0081lb/in ²)
10mm (0.39in)	8.00kg/m ² (0.0113lb/in ²)	6.20kg/m ² (0.0088lb/in ²)	6.00kg/m ² (0.0085lb/in ²)	5.90kg/m ² (0.0083lb/in ²)
15-25mm (0.59-0.98in)	8.38kg/m ² (0.0119lb/in ²)	6.48kg/m ² (0.0092lb/in ²)	6.09kg/m ² (0.0086lb/in ²)	6.04kg/m ² (0.0085lb/in ²)
25-35mm (0.98-1.37in)	8.60kg/m ² (0.0122lb/in ²)	6.65kg/m ² (0.0094lb/in ²)	6.12kg/m ² (0.0087lb/in ²)	6.07kg/m ² (0.0086lb/in ²)
35-55mm (1.37-2.16in)	8.68kg/m ² (0.0123lb/in ²)	6.71kg/m ² (0.0095lb/in ²)	6.18kg/m ² (0.0087lb/in ²)	6.13kg/m ² (0.0087lb/in ²)
55-85mm (2.16-3.34in)	8.98kg/m ² (0.0127lb/in ²)	6.94kg/m ² (0.0098lb/in ²)	6.39kg/m ² (0.0090lb/in ²)	6.34kg/m ² (0.0090lb/in ²)
85-145mm (3.34-5.70in)	9.30kg/m ² (0.0132lb/in ²)	7.30kg/m ² (0.0103lb/in ²)	7.00kg/m ² (0.0099lb/in ²)	6.80kg/m ² (0.0096lb/in ²)
145-255mm (5.70-10.03in)	9.50kg/m ² (0.0135lb/in ²)	7.10kg/m ² (0.0100lb/in ²)	6.80kg/m ² (0.0096lb/in ²)	6.60kg/m ² (0.0093lb/in ²)
255-365mm (10.03-14.37in)	10.00kg/m ² (0.0142lb/in ²)	9.00kg/m ² (0.0128lb/in ²)	8.00kg/m ² (0.0128lb/in ²)	7.50kg/m ² (0.0106lb/in ²)

 **RAAFT®** FIND OUT MORE OR REQUEST A SAMPLE
e: technical@raaft.co
w: raaft.co

Preventa Metal Adjustable Pedestals

Technical datasheet

APPLICATION

A height adjustable metal pedestal range designed to support Raaft® Aluminum Joists. Engineered to create safe and reliable external terrace support structure system that is fast and easy to install.

INSTALLATION INFORMATION

Preventa pedestals seamlessly integrate with our joist and tile system, ensuring straightforward installation. They feature an external finish that withstands various weather conditions. Raaft®'s connectors are universally compatible with the pedestals across all applications, providing a versatile solution for every scenario.

In instances where additional height is needed beyond the initial order, we offer extenders. These extensions easily attach to the pedestals by removing the top section and screwing in the extender, accommodating any height variation required. The pedestals also offer swift adjustments using a standard 8mm (0.3in) hexagon key, which can be attached to a drill for efficient height adjustments, whether dealing with tall pedestals or transitioning from the lowest to highest settings in mere seconds.

EXTERNAL FINISH



External



SUSTAINABILITY

Steel is very sustainable because once it is made, it can be used forever. Steel can be recycled an infinite amount of times and be used with NO downgrading in quality.

The non-renewable resources used to make steel, like minerals and fossil fuels, are not wasted because the steel will be used forever.

Steel is amongst some of the materials that are certified under the Green Buildings Rating System. Such as International Green Construction Code (IgCC) and USGBC's LEED (Leadership in Energy and Environmental Design) just to name a couple of sustainable certifications steel possesses.



RAAFT® FIND OUT MORE OR REQUEST A SAMPLE
e: technical@raaft.co
w: raaft.co

Preventa Metal Adjustable Pedestals

Technical datasheet

PRODUCT MAINTENANCE

ALUMINIUM

With an external finish coating on our pedestals, little to no maintenance is required.

FIRE PROTECTION

The Metal Adjustable Pedestals are manufactured from zinc-coated steel which is a non-combustible material deemed to be Class A in accordance with the European Commission decision of 4 October 1996 (Document: 96/603/EC).

PROTECTIVE EQUIPMENT

- Cut-resistant safety boots/shoes with toe protection
- Protective eyewear
- Strong gloves to protect the hands.
- If using loud cutting equipment then ear plugs or defenders should be worn.

STORAGE AND HANDLING

For pedestals, it is strongly advised to store them in a dry environment with the packaging intact until installation to prevent damage and the accumulation of trapped moisture. The pedestals are packaged in boxes with a weight limit designed for safe handling by a single person.

ACCESSORIES



JOIST TO PED CONNECTOR

This is used to connect the pedestal to the Joist.



SLOPE CORRECTOR

This is used to correct a sloping on the surface.



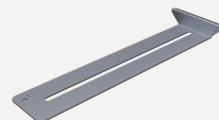
SPACER TABS

Used to maintain consistent gaps between surfaces.



EXTENDER

If the pedestal height needs altering to meet project requirements then an extender may be used.



TILE WALL SPACERS

Wall tile spacers are to be used when butting tiles against the edge of the building to avoid slipping of tiles and keeping a consistent 10mm (0.39in) gap around the perimeter.