

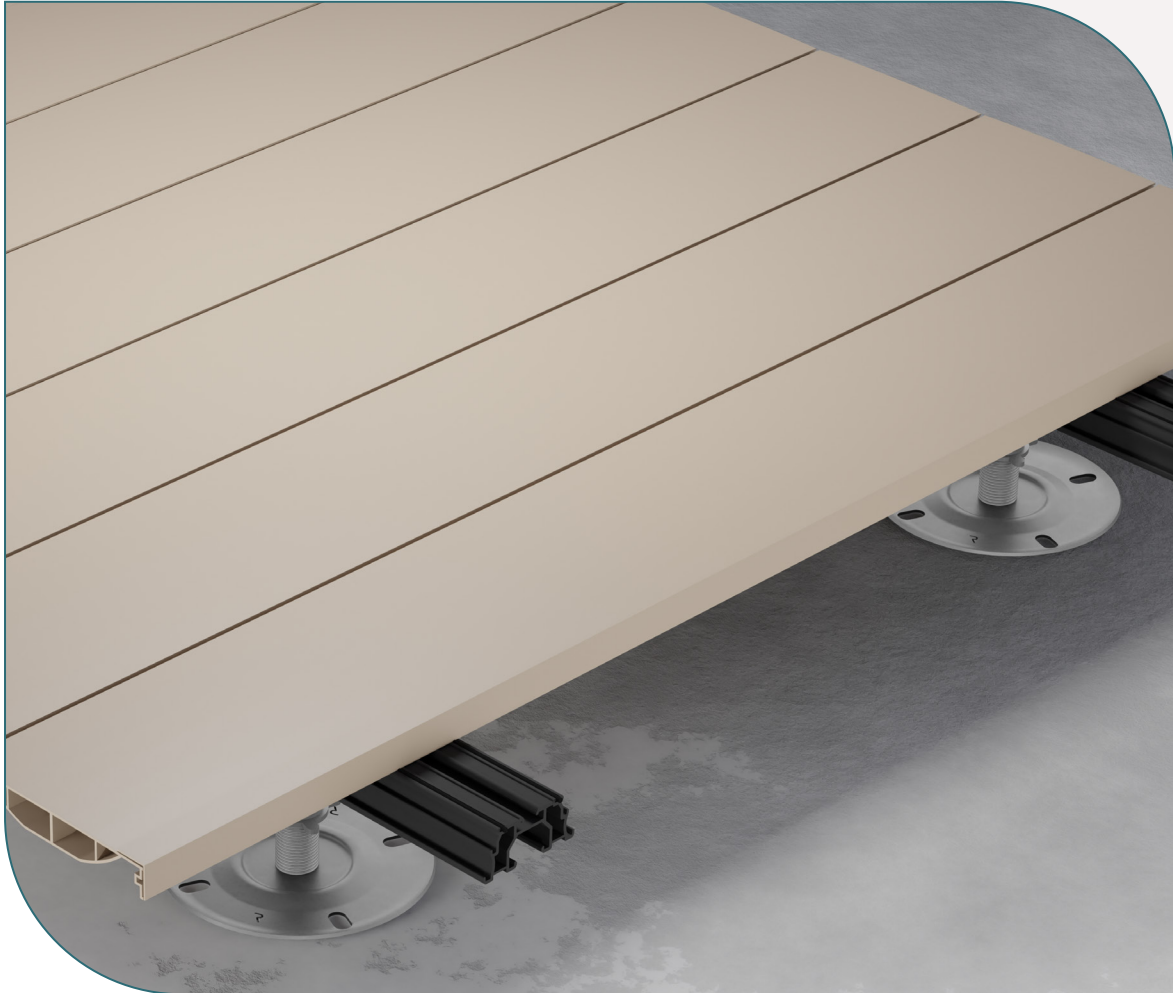
DATA SHEET  
Reference:  
DS-AD-0124

# Aluminium Decking

Technical datasheet

# Aluminium Decking

## Technical datasheet



Aluminium Decking

**RAAFT**<sup>®</sup> **FIND OUT MORE OR REQUEST A SAMPLE**  
e: [technical@raft.co](mailto:technical@raft.co)  
w: [raft.co](http://raft.co)

# Aluminium Decking

## Technical datasheet

### ALUMINIUM JOISTS

| SKU | PRODUCT            | DIMENSIONS  |                                  |                    | THICKNESS         | WEIGHT/<br>LENGTH       | MATERIAL  | FINISH           |
|-----|--------------------|---|----------------------------------|--------------------|-------------------|-------------------------|-----------|------------------|
|     |                    | H   | W                                | L                  |                   |                         |           |                  |
| -   | Board              | 19mm edges<br>(0.75in) and<br>20mm middle<br>(0.78in) | 140mm<br>(5.51in)                | 4.00m<br>(13.12ft) | 1.5mm<br>(0.05in) | 1.54kg/m<br>(1.03lb/ft) | Aluminium | Powder<br>coated |
| -   | Starter<br>Channel | 20mm<br>(0.78in)                                      | 10mm - 17mm<br>(0.39in - 0.66in) | 4.00m<br>(13.12ft) | 1.5mm<br>(0.05in) | 0.21kg/m<br>(0.14lb/ft) | Aluminium | Powder<br>coated |
| -   | End Cap            | 20mm<br>(0.78in)                                      | 21mm<br>(0.82in)                 | 4.00m<br>(13.12ft) | 1.5mm<br>(0.05in) | 0.11Kg/m<br>(0.07lb/ft) | Aluminium | Powder<br>coated |

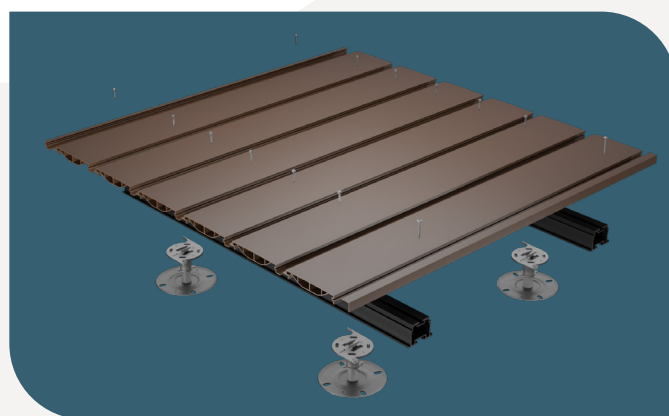
### APPLICATION

The application for this product would be mainly on Balconies, and this is due to the fact it is fire resistant and non-combustible to A2, D0, S1 standards.

(A2 being one of the highest fire rating standards, D0 is the droplets rating and S1 being the best result for smoke production – S1 meaning the smoke production is extremely low)

Due to the fact it is 20mm (0.787in) in height, matching the Raaft® tiles, so long as the planning is done correctly this product could be used in tandem with the Tiles in a terrace situation.

The Balconies also must be inset, as this will mean that the water drainage system is already in place. Water drainage systems don't come as standard in Cantilevered balconies, and the Aluminium decking product currently doesn't support water drainage.



**RAAFT®** FIND OUT MORE OR REQUEST A SAMPLE  
e: [technical@raaft.co](mailto:technical@raaft.co)  
w: [raaft.co](http://raaft.co)

# Aluminium Decking

## Technical datasheet

### INSTALLATION INFORMATION

For details about how the product would be installed, please ask for the animation demonstration from one of the Raaft® team.

### PRODUCT FINISHES

The Product is powder coated with a specific type of powder coat from Akzo Nobel, and on this Data sheet they ensure that the finish will meet an R11 slip resistance meaning that if we use this, we are covered for the slip resistance.

### SUSTAINABILITY

Aluminium is arguably the most sustainable building material in the world. This statement has been echoed by numerous sources and articles globally, and the reasons for this are plentiful.




Beige Grey    Almond    Sand    Brown

The best way to understand exactly what type of material we are dealing with, is to firstly gauge that when referring to the lifespan of this material, it is commonly measured in decades rather than in years. The following properties dictate why this is the case:

1. The material is 100% recyclable. There are numerous estimates that suggest that up to 75% of the aluminium in use today has been recycled from over a century ago. Adding to this point is that when you recycle aluminium it retains all its properties, meaning endless recycling is possible. (When the old Wembley stadium was demolished 96% of the aluminium was reclaimed and recycled). Furthermore, the actual process of recycling the aluminium only uses 5% of the energy of the initial process to remove it from its ore – this means not only is it easy to recycle, but cost effective to do so.
2. It is extremely corrosion resistant. This is because it spontaneously forms a thin but effective oxide layer that will prevent any further oxidation. On top of this if you factor in that this aluminium oxide layer is also impermeable, you have a product that almost self-heals, and protects from further damage. This can then be further enhanced as the material is easily coated, so powder coating or galvanising the material will only enhance the lifespan further whilst contributing a wide range of added aesthetics.
3. The material properties make for an excellent breadth of applications:
  - The key property of Aluminium would likely be its malleability – the fact that this material can easily be shaped and bent in ways that other metal likely cannot, places a huge importance on this property.
  - It has excellent machinability, meaning that it is a material that can be cast, machined, or formed into numerous complex shapes.
  - It can be alloyed easily. This means that there are plenty of different types of aluminium to suit an even wider range of applications. Alloys can increase strength, heat resistance, electrical resistance, and various other key properties.



 **RAAFT®** [FIND OUT MORE OR REQUEST A SAMPLE](#)  
e: [technical@raaft.co](mailto:technical@raaft.co)  
w: [raaft.co](http://raaft.co)

# Aluminium Decking

## Technical datasheet

### PRODUCT MAINTENANCE

The product maintenance for the aluminium decking is very low. This is down to aluminium being very resistant to wear, along with the powder coating used specifying that it will have a protective lifespan of 10+ years.

The cleaning process will only require soapy water, and a non-abrasive sponge to rinse the board free of any residue.

### FIRE PROTECTION

In its untreated form, aluminium is non-combustible. Powder coated - A1- S1D0 Compliant. Fire tested to A roof level. No toxic gas given off.

### PROTECTIVE EQUIPMENT

When using the product, there will be very little protective equipment needed. The only time you'll need protective equipment might be when a board is lifted for cleaning or obtaining something underneath.

When doing this, you'll need the following:

- Gloves
- Eyewear
- Appropriate PPE

This is the exact same when it comes to installing the boards.

### STORAGE AND HANDLING

The product is securely packed and sealed in clear plastic sleeving to ensure no movement of the product in transit. Depending on the size/weight of the consignment this may be palletised.

Whilst there is no specific weight restrictions on what is or is not safe to lift in manual handling, an assessment of the health and safety risks should be undertaken and measures taken to reduce the risk of injury so far as reasonably practicable.

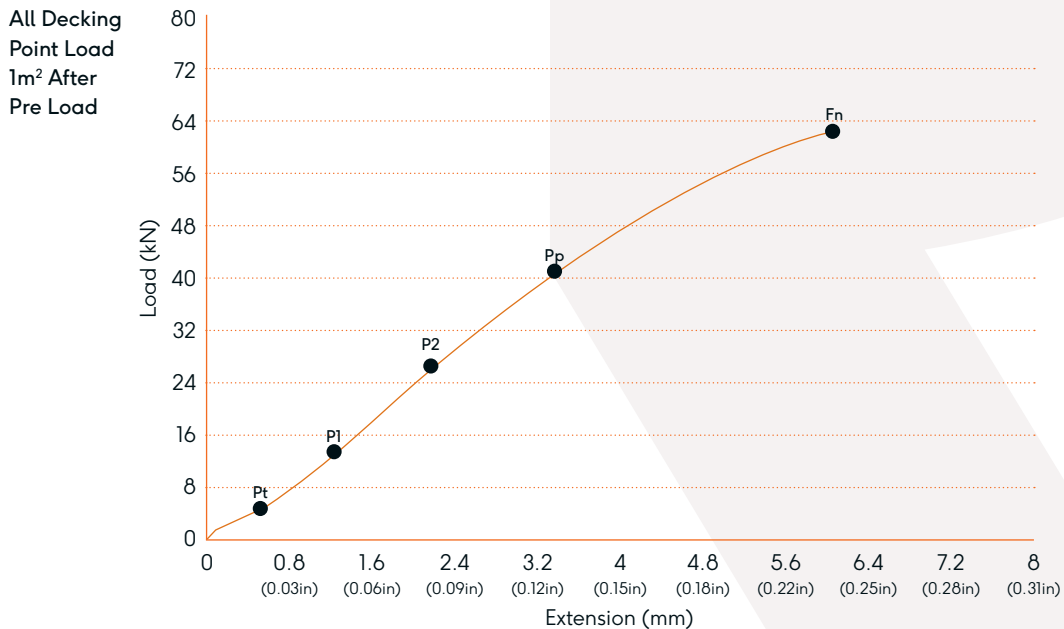
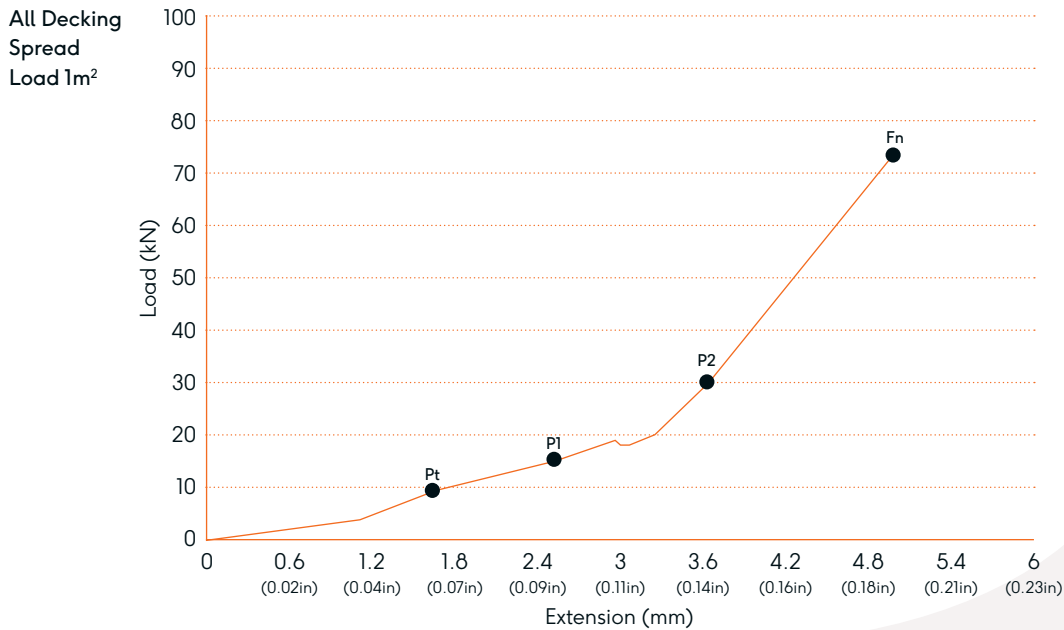
The following guidelines may be useful:

- a) Each person should be fully trained in manual handling techniques.
- b) The use of handling aids such as a trolley, folk-lift, pallet truck or conveyor should be used if moving large volumes of cartons.
- c) Break up large consignments into more manageable loads.
- d) Ensure that the product is stored at a reasonable height, so avoiding the lifting of cartons from floor level or above shoulder height.

# Aluminium Decking

## Technical datasheet

### ALUMINIUM DECKING LOAD TESTS



**RAAFT®** FIND OUT MORE OR REQUEST A SAMPLE  
e: [technical@raaft.co](mailto:technical@raaft.co)  
w: [raaft.co](http://raaft.co)